

Manual

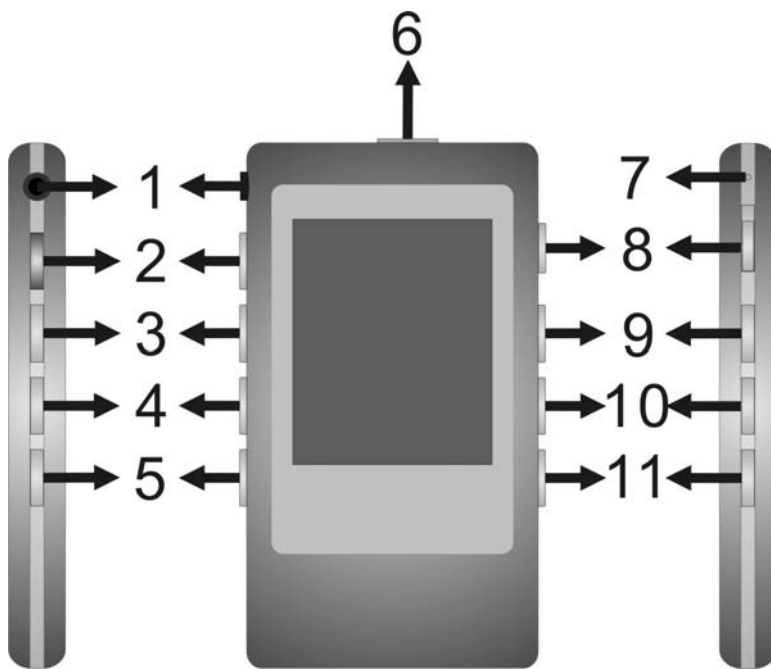
Model: ET-UC12PTH

【Manual】

I. APPEARANCE LAYOUT	3
II. BASIC FUNCTION.....	4
III. MUSIC MODE.....	6
A. KEYS OPERATION	6
B. INSTRUCTION	6
IV. VOICE RECORD	7
A. BUTTON OPERATION	7
B. INSTRUCTION	8
V. PLAY VOICE FILES	9
VI. FM MODE	10
A. BUTTON OPERATION	10
B. INSTRUCTION	10
VII. PICTURE	11
A. INSTRUCTION	11
B. ENTER THE FILE SELECTION	11
C. SUBMENU	11
VIII. E-BOOK.....	12
A. INSTRUCTION	12
B. CAUTION.....	12
IX. SYSTEM SETTING	12
A. SYSTEM FUNCTIONS.....	12
B. INSTRUCTION	13
X. OTHER FUNCTION.....	14
A. USE DIFFERENT FOLDER (STOP TO USE SUB-MENU).....	14
B. FILES DELETE INDICATION	15
C. REPEAT OPERATION	15
D. TEMPO RATE ADJUSTMENT	16
E. REPLAY FUNCTION	16
XI. FLASH DISK	17
A. CONNECT TO PC	17
B. FLASH DISK FUNCTION/ DOWNLOAD MP3 FILES	17
C. TRANSFORM ACT FILES TO WAV FILES	18
D. CONVERT VIDEO FILES INTO AMV	19
XII. PRIVACY FUNCTION	21
XIII. FIRMWARE UPGRADE.....	22
XIV. TROUBLE SHOOTING.....	24
XV. TECHNICAL SPECIFICATIONS	24

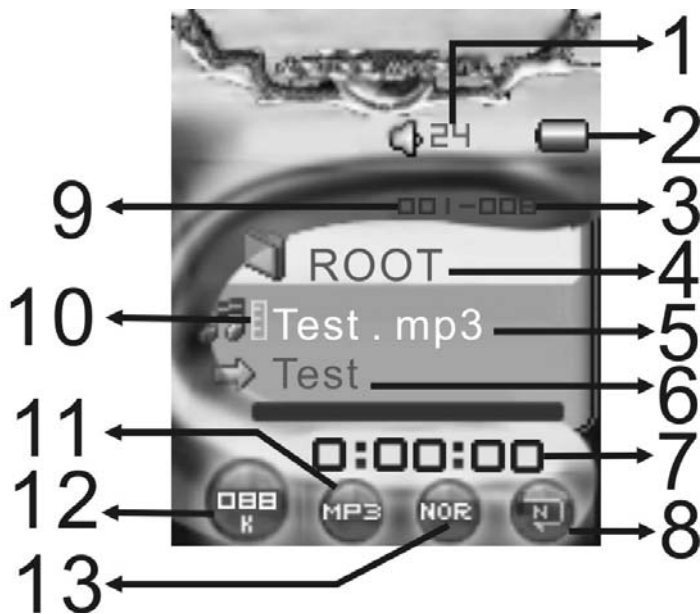
I. Appearance Layout

- Name of the parts



1 .Earphone	Jack for earphone headset
2 .REW	Back Track / Fast Backward
3 .FF	Next Track / Fast Forward
4 .VOL+	Increase Volume
5 .VOL-	Decrease Volume
6 .USB	USB connector
7 .Mic	Built-in microphone
8 .Power Switch	Power On / Off
9 .Menu	Enter into main menu in play Enter into sub menu in stop
10.Play / Pause / Power On (Switch on)	
11.REC	Start recording immediately

Picture1 The UFD Picture



1. Volume Indicator
2. Battery Indicator
3. Total number of tracks
4. Folder name
5. Playing track's name
6. Next track to play name
7. Total time played
8. Replay mode
9. The order of tracks
10.Lyrics indicator
11.File format
12.Bits rate
13.EQ mode

- Name of the LCD

Picture2 The LCD Picture

- Battery

There are 9 levels of battery control

▣ When the battery is fully charged, the battery icon will indicate full. This will slowly decrease according to the battery usage.

▣ When the battery storage is nearly used up, it will indicate empty. Please recharge the battery.



II. Basic Function

(a) Enter the Main Menu

Make use of key MODE to select the different functions. There is a main function menu (long press key MODE when it is in stop status), sub menu when in play status (press key MODE to enter), and sub-menu when in stop status (press key MODE to enter).

(b) Preview operation

A. Press key ►► or ◀◀ for music selection.

B. When tracks are playing, press key: VOL+/VOL- to adjust the volume.

(c) Enter different modes

You can enter different menu from the main function's menu

- Main Menu: (Long press key MODE to enter)



<p>Music Mode</p>	<p>Record Mode</p>	<p>Voice Mode</p>	<p>FM Mode</p>
<p>Photo</p>	<p>Setup</p>	<p>E-book</p>	<p>Movie</p>

- Connection Mode (UFD):

III. Music Mode

A. Keys Operation


Music Mode 

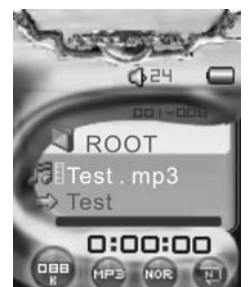
Keys	Press	Stop Status	Play Status	Submenu of play status	Submenu of stop status
	Long	Power off	Power off	Power off	Power off
	Short	Play	Stop	Exit menu	Exit Menu
Mode	Long	Enter Menu	Enter Menu	Enter Menu	Enter Menu
	Short	Enter the submenu of stop status	Enter the submenu of play status	Confirmation or enter	Confirmation or enter
	Long	Continue to Preview forward	Fast forward	Continue to move forward	Continue to move forward
	Short	Next	Next and Play	Move the submenu	Move the submenu
	Long	Continue to Preview Backward	Fast backward	Continue to move backward	Continue to move backward
	Short	Previous	Previous and Play	Move the submenu	Move the submenu
VOL+	Long	Increase Volume continuously	Increase Volume continuously	X	X
	Short	Increase Volume	Increase Volume	X	X
VOL-	Long	Decrease Volume continuously	Decrease Volume continuously	X	X
	Short	Decrease Volume	Decrease Volume	X	X
REC	Long	Record immediately	Record immediately	A-B Repeat	Record immediately
	Short	Record immediately	A-B Repeat	A-B Repeat	Record immediately

Note: Short: press the key for 1 second
 Long: press the key for 3 seconds

B. Instruction

(a) Simple Operation

- Ensure that the earphones are well connected in to the earphone jack.
- Make sure the key Power is switched on.
- Long press key  and the player will enter into the last used mode / status.



- Press key ►► or ◀◀ to select Music Mode, and press key MODE to enter Music Menu.
- Music selection: Press key ►► or ◀◀ to select the tracks.
- Volume adjustment: Press key VOL+/VOL- to adjust volume.
- Caution: The player will turn off automatically when it is not in play mode / status.

(b) Equalizer

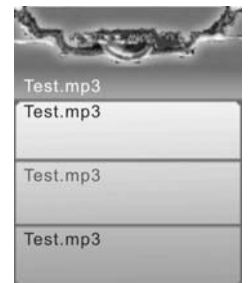
- When the music is playing:
- Press key MODE to enter the submenu of play status
- Press key ►►/◀◀ to select Equalizer.
- Short press key MODE to confirm.
- Then press key ►►/◀◀ for EQ selection: Natural, Rock, Pop, Classic, Soft, Jazz and DBB

(c) Lyrics' Switch

This player supports *.LRC files. If there is lyrics file under the same folder of the MP3 with the same name; the player will play MP3 and lyrics synchrony.

If there is a lyric for the song, the LCD will display the lyric.

- If there is a lyric, the lyrics indicate light will show green.
- Long press key MODE to enter the Lyrics interface
- Lyrics will display on the screen. – Delete this its repetitive
- Press key MODE will return title interface:



(d) Play movie files

- AMV selection: Press key ►► or ◀◀ to select the AMV files.
- Caution: In playing AMV file, you can't choose any others functions. (For example adjust volume, go to the submenu.
- If the LCD screen is showing 'Format error!' it means that the player is not able to support this particular type of AMV files. Please check the files.

IV. Voice Record

A. Button Operation

Record Mode 

Keys	Press	Stop Status	Record Status
Play	Long	Power off	Stop Recording
	Short	Start Recording	Pause Recording
Menu	Long	Enter Main Menu	X
	Short	Enter submenu	X

Make sure that the players battery is fully charged or has sufficient power before you start recording.

The player supports 99 files for each folder.

B. Instruction

(a) Record Mode

- Enter the main menu:
- Press key ►/◄ to select Record:
- Press key MODE to enter:
- Press key ►/◄ to start record.



⚠ The recorded voice will be saved in the root folder in the submenu of record stop status/main menu.

⚠ If the LCD screen is showing "Memory Full", there is not enough memory storage for new recordings. Please delete some of the files for memory release.

⚠ If the LCD screen is showing "Folders full", there are already 99 files in the folder. Please change another folder.

(b) Types of Recording Format (The Recording Type is selected as Voice Recording)

- Enter the stop record status interface:
- Press key MODE to enter the submenu of record mode:
- Press key ►/◄ to select Record Type:
- Press key MODE to enter:
- Press key ►/◄ for selection.
 - ⏏ : Fine REC, wav format, good voice quality.
 - ⏏ : Long REC, act format, normal voice quality.
 - ⏏ : Fine VOR, wav format (voice record control, pause when with no voice).
 - ⏏ : Long VOR, act format.

- Press key MODE for confirmation
 - Press key ►||/■ to start record.
- (c) Types of Recording Format (The Recording Type is selected WAV Music Recording)
- Enter the stop record status interface:
 - Press key MODE to enter the submenu of record mode:
 - Press key ►►/◄◄ to select sub-functions:
 - ✓ Track mode: You can use this function which can auto separate the record file.
 - ✓ Record type: There are 32k, 64k, 128k, 192k bit rates can be selected.
- (d) Types of Recording Format (The Recording Type is selected MP3 Recording)
- Enter the stop record status interface:
 - Press key MODE to enter the submenu of record mode:
 - Press key ►►/◄◄ to select sub-functions:
 - ✓ Track mode: You can use this function which can auto separate the record file.
 - ✓ Record type: There are 32k, 64k, 128k, 192k bit rates can be selected.

V. Play Voice files

- Enter into the main menu:
 - And the Key Operation is the same with Music Mode.
1. Press key ►► to select Voice Mode:
 2. Press key MODE to enter play voice interface:
 3. Press key ►||/■ to start playing voice.
 4. Voice selection: Press key ►► or ◄◄ to select the voice.
 5. Volume Adjustment: Press key VOL+/VOL- to adjust volume.



VI. FM Mode

A. Button Operation

FM Mode

Keys	Press	Stop Status	Record Status
Play	Long	Power Off	Power Off
	Short	Have saved channels : Next No saved channel : X	EXIT
Menu	Long	Enter Main Menu	Enter Main Menu
	Short	Enter submenu	Confirmation or enter
▶▶	Short	Increase the frequency of 100KHz	Move the submenu
	Long	Increase the frequency of 100KHz continuously	Continue to move forward
◀◀	Short	Decrease the frequency of 100KHz	Move the submenu
	Long	Decrease the frequency of 100KHz continuously	Continue to move backward
VOL+	Long	Increase Volume continuously	Increase Volume continuously
	Short	Increase Volume	Increase Volume
VOL-	Long	Decrease Volume continuously	Decrease Volume continuously
	Short	Decrease Volume	Decrease Volume
REC	Long	Record immediately	Record immediately
	Short	Record immediately	A-B Repeat

B. Instruction

- (a) Enter into the Main Menu
- (b) Press key ▶▶ to select FM
- (c) Short press key MODE to enter the FM
- (d) Auto detect



Press key ▶▶ / ◀◀ for hold 2 second. The UFD will Increase / Decrease the frequency of 100KHz continuously, and will stop in searched station ; If you want stop search, Press Key ▶▶ / ◀◀ will stop search.

- (e) Fine-tune
 - Press Key ◀◀ : Decrease the frequency of 100KHz
 - Press Key ▶▶ : Increase the frequency of 100KHz
- (f) Save the searched radio channel / station
 - Press key MODE to enter the submenu of the FM mode

- Short press key Menu one time to save the station
- (g) Choose the saved radio channels
 - Press key Play to change the radio channels / stations which you saved.
- (h) Volume Adjustment:
 - Press key VOL+/VOL- to adjust volume.

Caution:

You can choose `Normal Band` (FM 87 - 108MHz) and `Japan Band` (FM 76 – 90MHz), In the different countries (Press key Menu go to the FM submenu , press key

▶▶ / ◀◀ to choose)

- If the radio channel / station is in stereo , the LCD screen will show the sign.



: “Normal Band” and “Japan Band” can automatically save 20 radio channels / stations.

VII. Picture

A. Instruction

- (a) Enter to the Main Menu
- (b) Press key ▶▶ to select Picture
- (c) Short press the key MODE to enter the Picture

B. Enter the file selection

- (a) Press the key “Play” to browse JPEG.
- (b) Press the key “▶▶/◀◀” to select the next/last file.
- (c) Press the “MODE” button, enter the stop submenu.

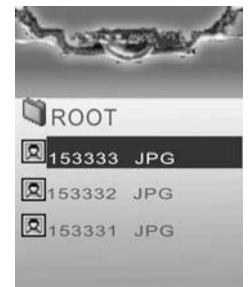
C. Submenu

There are four modes in following points.

1. Local folder: select the folder to play pictures.
2. Play set: manual play and auto play
3. Delete file.
4. Exit

Press the “▶▶/◀◀” button to play the next/last picture

Long press the “menu” button to enter pervious menu

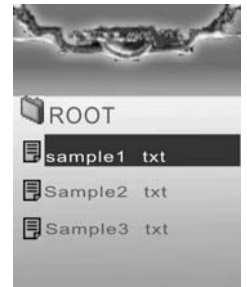


VIII. E-Book

Use of the E-Book function. This function can only support text files. Once you have copied the text files into the player you can read them accordingly.

A. Instruction

- (a) Enter into the Main Menu
- (b) Press key **▶▶** to select E-Book function. And press key **MODE** again to get into the function.
- (c) Dir Select:
 - Press key **▶▶** or **◀◀** to select folder.
 - And press key **MODE** to confirm.
- (d) File Select:
 - Press key **▶▶** or **◀◀** to select text file.
 - And press key **MODE** to confirm.
- (e) Text Reader:
 - Press key **▶▶** or **◀◀** to next/back page.
 - Press key **MODE** to exit text reader.



B. Caution

- If you want to read the txt file in folder, you must select the folder on step one.
- Second step, select text file.
- Third step, read text file.
- If LCD screen is showing 'No Files!' please check the above steps.

IX. System Setting

- Enter the main menu:
- Press key **▶▶** to select Setting:
- Short press key **MODE** to enter:



A. System functions

System time	Setting date and time when saving recorded file
Record type	Select the record type
LCD set	Set timing darkle screen

Language	Choosing different languages
Power off	Set off time or sleep time
Replay mode	Setting repeat status
Online mode	Set the disk show on the PC when connecting the PC via USB
Memory info.	Check memory space and usage status
Firmware version	Version of player's firmware
Firmware upgrade	Use for upgrade firmware
Battery Charge	Set starting or stop charge
Exit	Exit from Setting interface

Picture3 System icon

B. Instruction

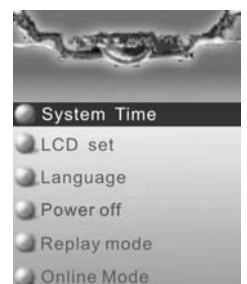
- **System Time** Enter into the system interface and then select System Time:
 - ✓ Press the key MODE to enter:
 - ✓ Press the key ►► from year to start setting, the display year will flicks
 - ✓ Press the key ►► will increase the number (◀◀ will decrease)
 - ✓ Press the key MODE when finish and exit.
- **Recording type**
 - ✓ There are 3 kinds of recording type that can be selected.
 - ✓ Voice Recording: Standard voice recording, the file format is WAV (32K) or ACT (8K).
 - ✓ WAV Music Recording: Set the voice recording, file format is WAV, and you can select the bit rates at record submenu.
 - ✓ MP3 Music Recording: Set the voice recording file, format is MP3, and you can select the bit rates at record submenu.
- **LCD set**
 - ✓ Darkle: Set the time to close backlight.



- **Language**

Make use of the key ►►/◀◀ to select the language you want in the Language mode.

Press the key MODE again to confirm.



- Power off

- ✓ Enter into the system interface and then rotate key MODE to select Power off.
- ✓ Press the key MODE to enter. There will be 2 selections:
 - I. Off time: the player will automatically at a certain time without any key being pressed will switch into stop status.
 - II. Sleep time. The player will shut down automatically at a certain time without any key being pressed into off status.

- Replay mode

- ✓ Operation is the same as “Language”.
- ✓ Manual Replay: Replay by manually
- ✓ Auto Replay: Replay automatically.

- Online Mode Operation is as “Language”.

- ✓ Some operating systems do not support 2 UFD, and so you can set it as “Normal Only/Encrypted Only”.

- Memory Info

Display the total memory storage, and the percentage used up.

- Firmware version

Display the firmware version.

- Firmware upgrade

Use to upgrade the firmware; the firmware must be first transfer to the player for upgrade.

- Battery Charge

- ✓ You can start or stop the battery charging operation.



Note: Press the key MENU after the systems are set and then press key Play for exit.

X. Other Function

A. Use different folder (stop to use sub-menu)

User can separate different types of files into different folders (created

from the PC) for convenient use. The player supports 9 submenus.

- (a) Go to stop (pause) status (of any mode)
- (b) Press key MODE to enter the submenu:
- (c) Press key MODE to enter the folder interface:
- (d) Press key ► or ◀ to select the folder you want:
- (e) Press key MODE to confirm.

Caution: The submenu of Music, Recording and Voice mode are individual – i.e. each mode has a different folder.

B. Files Delete indication

You can delete files in music or voice mode

- (a) In stop status, press key MODE to enter the submenu
- (b) Press key ► or ◀ to select Delete file/ Delete all.
- (c) Press key MODE to delete file.






Caution: “Delete all” will delete all the files in that mode. (Once files are deleted they cannot be recovered).

C. Repeat operation


You can select different play mode in music or voice mode.

- (a) Press key Play to start playing music
- (b) Press key MODE to enter and select “Repeat”.
- (c) Then press key MODE again to enter. There are various selections, such as


● REPEAT

 Normal	Playing music files in sequence until the end of folder
 Repeat One	Repeat single music file
 Folder	Play all music files in folder
 Repeat Folder	Repeat all music files in folder
 Repeat All	Repeat all music files

● SHUFFLE

 Random	Play music files in folder randomly
--	-------------------------------------

● INTRO

 Intro	Play the 10s of each music files in sequence
---	--

D. Tempo Rate adjustment

You can select different playing speed while playing music (MP3 only) without any change to the voice quality.

- (a) Press key MODE while playing music
- (b) Press key ► or ◀ to select “Tempo rate”
- (c) Press key MODE again to enter.
- (d) Press key ► or ◀ to adjust the speed.

Caution: Once you adjust the rate, all songs will be played as set.

E. Replay function

● A-B Repeater

- (a) Press the key MODE while playing music
- (b) Press the key ► or ◀ to select “Replay”
- (c) Press the key MODE again to enter. The LCD will display with “A” blinking.
- (d) Press the key ► to confirm the start point “A”. The LCD will display with “B” blinking.
- (e) Press the key ► to confirm the end point “B”. The LCD will display stable and the player will play repeatedly from A to B

You can rotate the key ◀ to reset point A and B.



You can press the key ◀ to set the tempo rate in Replay mode.

● Follow Reading

- (f) In A-B repeater status, press key ► to enter follow reading function.
- (g) The LCD will display instead of , and the player will start to record, the record time length as the length of A-B repeater.
- (h) The player will play the original voice, the LCD will display . You can press key ► to enter compare reading.



In this status, press key ◀ will return to A-B repeater status.

● Compare Reading

- (i) In contrast reading, the LCD will display and the player will play the original voice.
- (j) When finished, the LCD will display and the player will play the recorded follow reading voice.

- (k) The player will repeat playing the original voice and the recorded voice continuously until key MODE is pressed.

! In this status, press the key ⏪ will return to follow reading mode.

! In the above 3 status, press the key MODE will quit Replay mode.

- Repeat times

- ✓ Operation is as “Backlight”.
- ✓ The numbers of times in repeating A-B repeat and then exit.

- Replay Gap

- ✓ Operation is as “Backlight”.
- ✓ This is to determine the time (in seconds) of pausing after playing each song.

XI. Flash Disk

This device does not need to install any driver system for Win ME/2000/XP, except for Win 98, format or recovery. It also support Windows 2K or above, Mac OS 10.3, Linux Redhat 8.0 or above.

The player also support Suspend mode

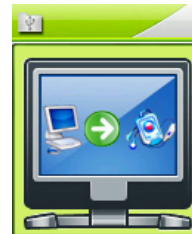
A. Connect to PC

After connected to the PC, the player will display 3 different pictures according to its status:

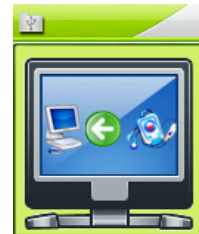
(a) Waiting Mode



(b) Downloading files



(c) Uploading files



B. Flash Disk Function/ download MP3 files

This product does not need to install any actuate system (except WIN98), you can immediately download any format of files by plug-in the USB hub to your PC.

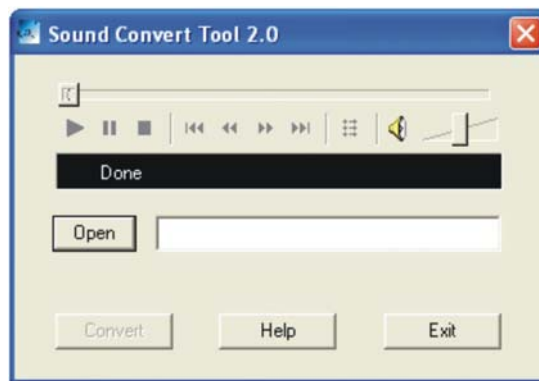
- (a) Once you switch on the product, the UFD would connect to the PC through the USB port. The system would detect a new hardware; follow the steps shown for installation. (WinMe/Win2000/XP can automatically finish installation). If the size of the UFD is too large and cannot be connected to the USB port, you can use our extended USB cable attached.

- (b) After installation, the LCD screen will display 『USB MUSIC DISK』 and on your computer within 『MY COMPUTER』 and 『FILE MANAGER』 『REMOVABLE DISK.』 OR 『USB MASS STORAGE DEVICE』 will appear.
- (c) Drag or Copy the files you need to the 『Removable Disk』 to start downloading. Downloaded MP3 files can be put into the main menu while others in the submenu. You can make use of “FILE SELECTION” to play the files which is in the submenu.
- (d) While downloading, the LCD would display the animation as shown, you are required to wait until the animation disappeared and furthermore five seconds before you can unplug or remove the UFD.

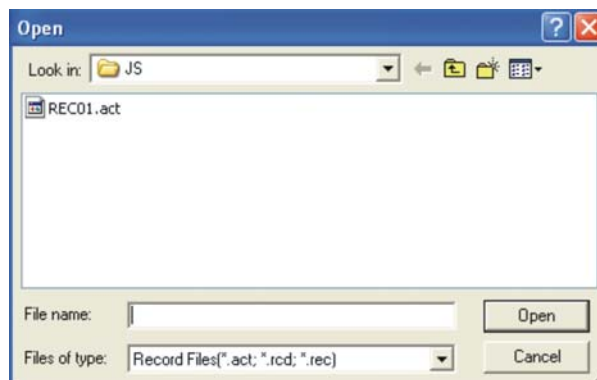
C. Transform ACT files to WAV files

You can make use of the attached software disk to transform WAV files.

- (a) Run “Sound Converter” and then click “Open”.



- (b) Select the act files for transform:





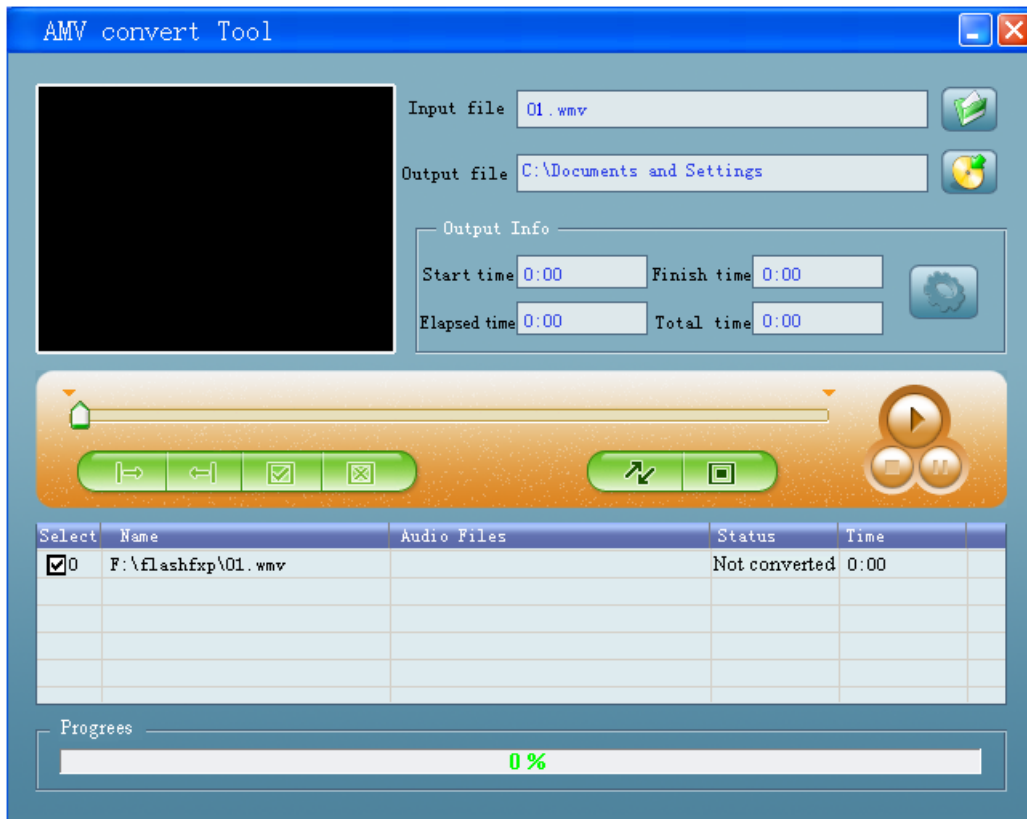
- (c) Click “Transform” to start files transform to wav files

You can also transform WAV files to MP3 files.

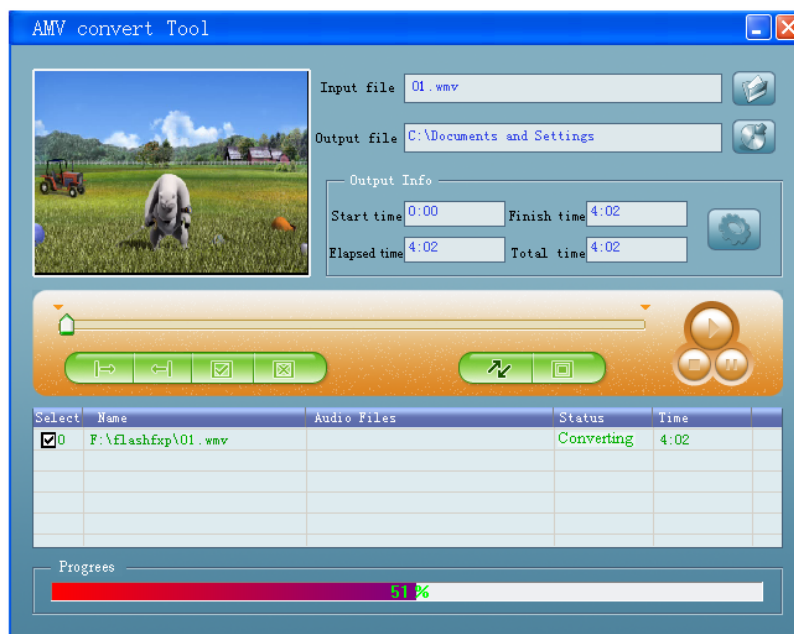
D. Convert Video files into AMV

This program is used to convert video files into AMV format, currently only WMV format is supported.

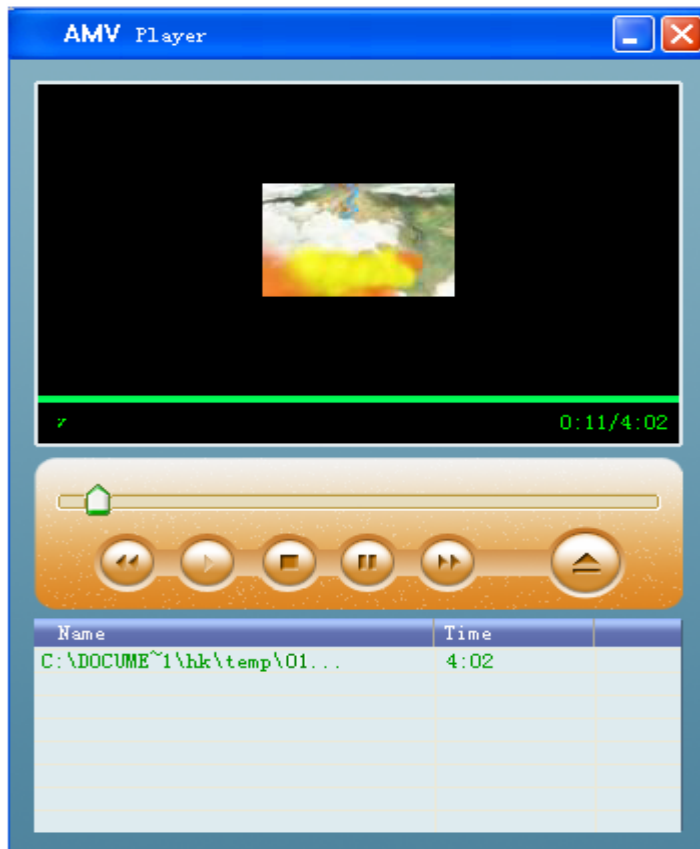
- (a) Run “AMV Convert Tools”, click  to choose the folder where to save the AMV files, then click  to select the folder where the original files are .



- (b) Click  to start converting.



(c) After converting, the AMV files will be played automatically.



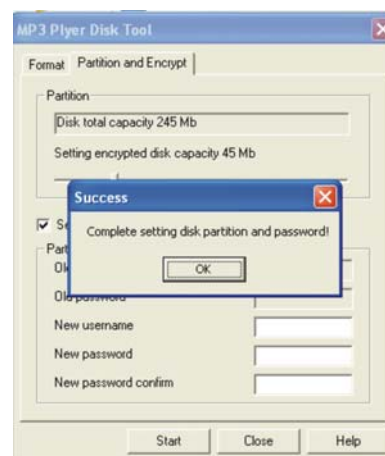
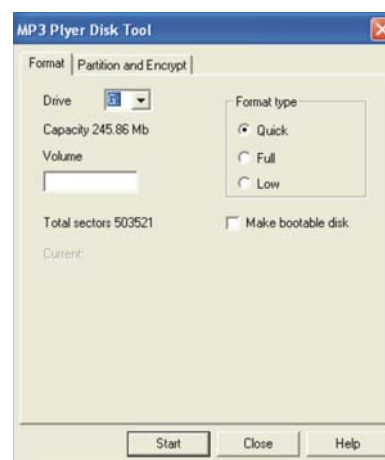
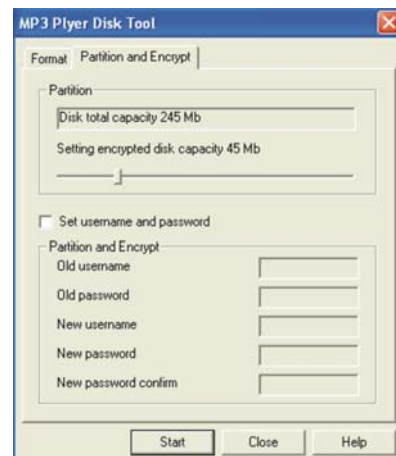
XII. Privacy Function

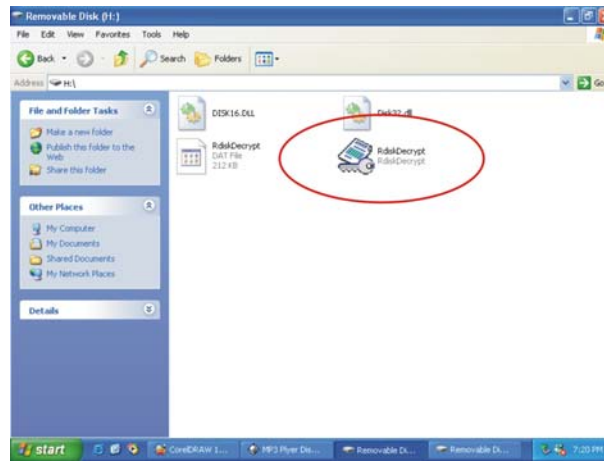
Most users will delete some files or private / secret files before lending the product to friends, in order to protect your privacy. This is very inconvenient!

From now on, this player will provide you a function to protect your own privacy.

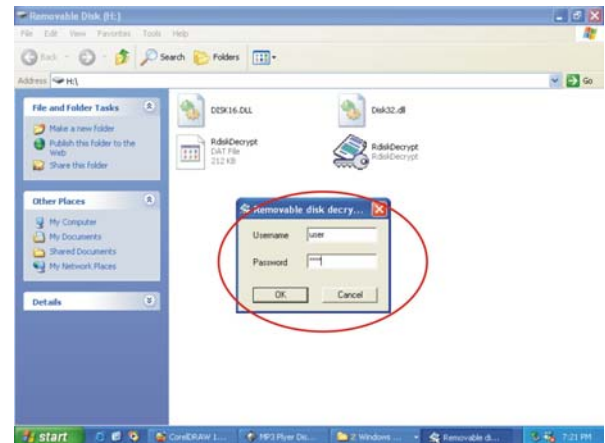
User can make use of the attached software in the CD to divide the drive memory into 2 (users can see 2 flash disk in the computer, for Windows 2K user must install SP4). Add password for one of the disk, and store your secret files in that disk. Only the user with the password can enter into the password protected drive.

- (d) Connect the player to the PC.
- (e) Run the attached software CD “MP3 Player Disk Tool”.
- (f) Select “Divide and add password”; set a desirable memory for needed. Then click “Set user and password”. Fill in the “new user”, “new password” and “repeat password (same as new password)”. Then click “Start” to start disk divide.
- (g) The window will display as show when finished, click “OK” and the window will re-start again
- (h) You will see 2 flask disks on your computer after it has restarted. Click to the disk added password (the 2nd unit) and you will see 3 files; 2 of them are invisible and one of it is .exe file, the disk memory is about 300K.





- (i) Run “RdiskDecrypt.exe” and a window will pop up as shown below, type in your user name and password. If it is correct, the disk will be open.



- (j) You must enter your user name and password to enter the disk every time.
- (k) If you don't want to use this function (cancel this function), please format the player by this program and all data will be deleted.

⚠ **Caution: Disk memory divide or combine will delete all the files in the player.**

⚠ **Caution:** Never forget your user name and password, or else you cannot enter the disk. You must need to combine (format) the disks to cancel password and this will delete all the files

XIII. Firmware Upgrade

Make use of the installed software in the computer to upgrade the firmware.

- (l) Enter the main menu
- (m) Press key ► to select “Setting”.
- (n) Press key MODE to enter.
- (o) Press key ► again to select “Firmware upgrade”
- (p) Press key MODE to enter
- (q) Connect the player to the PC.
- (r) Make use the attached disk, run “MP3 Player Update” and then click

“New firmware version”.

- (s) Select the new firmware (can be found in the attached CD, or download from the website)
- (t) Click “Start” to start firmware upgrade.
- (u) The player will display the following picture when finished.

⚠ Firmware upgrade is for better results; it is not necessary and will not influence the operation of the player itself.

⚠ Mistakes firmware upgrade will lead to abnormal operation! Please read carefully before you upgrade the player or ask advice from technician.

⚠ The firmware of this player is not suitable for any other players and vice versa.

XIV. Trouble Shooting

No power	<ul style="list-style-type: none"> ● Is the battery installed correctly ● Make sure that the product is turned on
Unable to listen from the earphone	<ul style="list-style-type: none"> ● Make sure that the volume is not 0, and the earphones well connected. ● Make sure that the earphone is clean ● Damaged MP3 will lead to various levels of noise or unable to be played. Make sure that the file is complete.
LCD display wrong characters	<ul style="list-style-type: none"> ● Make sure that you select the right Language
Unable to download music	<ul style="list-style-type: none"> ● Make sure that the USB connecting wire is not damage or it well connected. ● Is the driver installed? ● Make sure that there is enough memory storage left.

XV. Technical Specifications

Dimensions		
LCD	1.8" TFT, 65K color	
USB version	USB2.0 High Speed	
Memory	Flash memory:128M~1GB	
Battery	Max. play time: 8 hrs.	
	Built-in rechargeable Lithium-ion Battery	
Record	Sampling rate	8KHz
	Record format	WAV (32K bps), ACT (8K bps)
	Record time	35hrs.(ACT, 128M Flash)
MP3, WMA, WMV, ASF	Output	10mW (32Ohm)
	MP3 frequency	8K bps ~ 320K bps
	WMA, WMV, ASF frequency	5K BPS~384K BPS
	Input	20Hz~20KHz
	Voice rate	85dB
File format	MP1, MP2, MP3, WMA, ACT, WAV , ACT	
Language	Multi Language	
Operating system	Windows98/SE/ME/2K/XP、 Mac OS 10	

Note: Product design and spec may change without notice.